



FLAT DISPLAY TECHNOLOGY

10.4" Open Frame Monitor

Model Number: LOF104D xx-KxxR

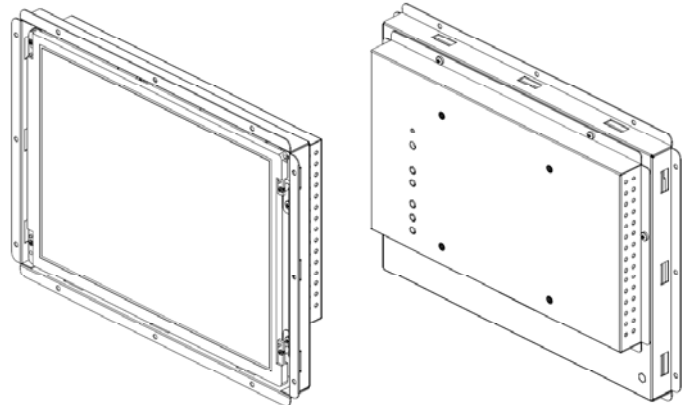


This product is RoHS compliant

SPEC No.: SAS-1212001

Version: 0.0

Issue Date: December 4, 2012



1. Introduction:

1.1 About the Product

The LOF104Dxx-KxxR 10.4" Open Frame Monitor series are rugged, high performance Industrial LCD Monitors, designed for commercial and industrial applications, such as kiosks, arcade games, ATM Machines, aviation simulators, military, medical, marine, security, industrial equipment, and instrumentation equipment. This product can provide high brightness and contrast to achieve better viewing effect.

1.2 Features

- 10.4 inch SVGA Active Matrix Color TFT LCD Monitor
- High Contrast 400:1 Typical
- Recommend resolution: 800x600 (SVGA)
- OSD controls: Allow on-screen adjustments of Brightness, Contrast, RGB Auto Color Balance, H-Position, V-position
- Multi system Video Input
- Signal loss backlight will be off / signal feed again backlight will be on
- Quick and easy integrations for Client solutions
- Universal AC Power input and auto detection video system.
- Touch screen (option)

FLAT DISPLAY TECHNOLOGY

■ LOF104Dxx-KxxR V0.0



2. Contents

Contents Index	Page
1. Introduction	1
1.1 About the product	1
1.2 Features	1
2. Contents	2
3. Specifications	3
4. Ordering Information	4
5. VGA Input Format	5
6. Mechanical Drawing	6-13
6.1 LOF104D00-K00R	6
6.2 LOF104D5A-K00R	7
6.3 LOF104D5B-K00R	8
6.4 LOF104D00-K10R	9
6.5 LOF104D5A-K10R	10
6.6 LOF104D5B-K10R	11
6.7 LOF104D03-K00R	12
6.8 LOF104D03-K10R	13
7. Packing List	14
8. Installing the Monitor	15
8.1 Power Cable Connection	15
8.2 VGA Signal Cable Connection	15
8.3 Video / S-Video Cable Connection	15
8.4 Switch On The Power	15
9. OSD Control	16-19
9.1 Menu Operation	16-18
9.2 Operations	19
10. Trouble Shooting	20
11. Panel Mount Installation (Mount Clamp and Screw)	21

3. Specifications

Parameter	Specifications	Unit	Remark
Model Name	LOF104D xx -K xx R		
Screen Size	10.4" (diagonal)	inch	
Display Format	800 x (R.G.B) x 600	dot	
Display Color	262,000 colors		
TFT-LCD Active Area	211.2 (H) x 158.4 (V)	mm	
Pixel Pitch	0.264 (H) x 0.264 (V)	mm	
Contrast Ratio	400:1(Typ.)		
Brightness	400 (Typ.)	Cd/m ²	
Viewing Angle	-70~70(H); -70~60(V)(Typ.)	deg	
Input/Output Interface	Video and S-video / D-Sub 15 pin female for VGA / USB (A Type) or RS-232 (DB9 Female) for Touch Screen Driver (Option)		
Power Source	100-240V _{AC} 50-60Hz, Universal / +12V _{DC} @ 3A		
Power Consumption	< 6W		@+12V
Touch Screen Controller	5 wire Resistive Driver USB/ RS232 (Option)		
Operating Temperature	-20~70 (With Touch -10~+70)	°C	
Storage Temperature	-30~80	°C	
LED Life Time	20000 (Min)	hr	25±2°C

4. Ordering Information

Parameter	LOF104D00-K00R	LOF104D5A-K00R	LOF104D5B-K00R	Unit
CVBS	1	1	1	
S-Video	1	1	1	
VGA	SVGA (800x600)	SVGA (800x600)	SVGA (800x600)	
Touch Panel Type	-	5W Resistive	5W Resistive	
Touch Screen Interface	-	USB	RS232	
Outline Dimension	266(W) x 204(H) x 39(D)	266(W) x 204(H) x 39(D)	266(W) x 204(H) x 39(D)	
Weight (Include Accessory)	2.09(2.89)	2.11(2.19)	2.11(2.19)	Kg
Frame Material (Color)	Iron	Iron	Iron	

Note: Weight \pm 10%

Parameter	LOF104D00-K10R	LOF104D5A-K10R	LOF104D5B-K10R	Unit
CVBS	-	-	-	
S-Video	-	-	-	
VGA	SVGA (800x600)	SVGA (800x600)	SVGA (800x600)	
Touch Panel Type	-	5W Resistive	5W Resistive	
Touch Screen Interface	-	USB	RS232	
Outline Dimension	266(W) x 204(H) x 39(D)	266(W) x 204(H) x 39(D)	266(W) x 204(H) x 39(D)	
Weight (Include Accessory)	2.09(2.89)	2.11(2.19)	2.11(2.19)	Kg
Frame Material (Color)	Iron	Iron	Iron	

Note: Weight \pm 10%

Parameter	LOF104D03-K00R	LOF104D03-K10R	Unit
CVBS	1	-	
S-Video	1	-	
VGA	SVGA (800x600)	SVGA (800x600)	
PMMA	⊙	⊙	
Touch Panel Type	-	-	
Touch Screen Interface	-	-	
Outline Dimension	266(W) x 204(H) x 39(D)	266(W) x 204(H) x 39(D)	
Weight (Include Accessory)	2.09(2.89)	2.09(2.89)	Kg
Frame Material (Color)	Iron	Iron	

Note: Weight \pm 10%

FLAT DISPLAY TECHNOLOGY

■ LOF104Dxx-KxxR V0.0



5. VGA Input Format

	Mode	Family	Resolution	H-Freq. (KHz)		V-Freq. (Hz)	
1	Mode 3	PC	640x480	31.47	(-)	59.9	(-)
2	Mode 4	VESA	640x480	37.86	(-)	72.8	(-)
3	Mode 5	VESA	640x480	37.50	(-)	75.0	(-)
4	Mode 6	VESA	800x600	35.16	(+)	56.3	(+)
5	Mode 7	VESA	800x600	37.88	(+)	60.3	(+)
6	Mode 8	VESA	800x600	48.08	(+)	72.2	(+)
7	Mode 9	VESA	800x600	46.88	(+)	75.0	(+)
8	Mode 10	VESA	1024x768	48.36	(-)	60.0	(-)
9	Mode 11	VESA	1024x768	56.48	(-)	70.1	(-)
10	Mode 12	VESA	1024x768	60.02	(+)	75.0	(+)
11	Mode 13	VESA	1280x1024	63.98	(+)	60.0	(+)

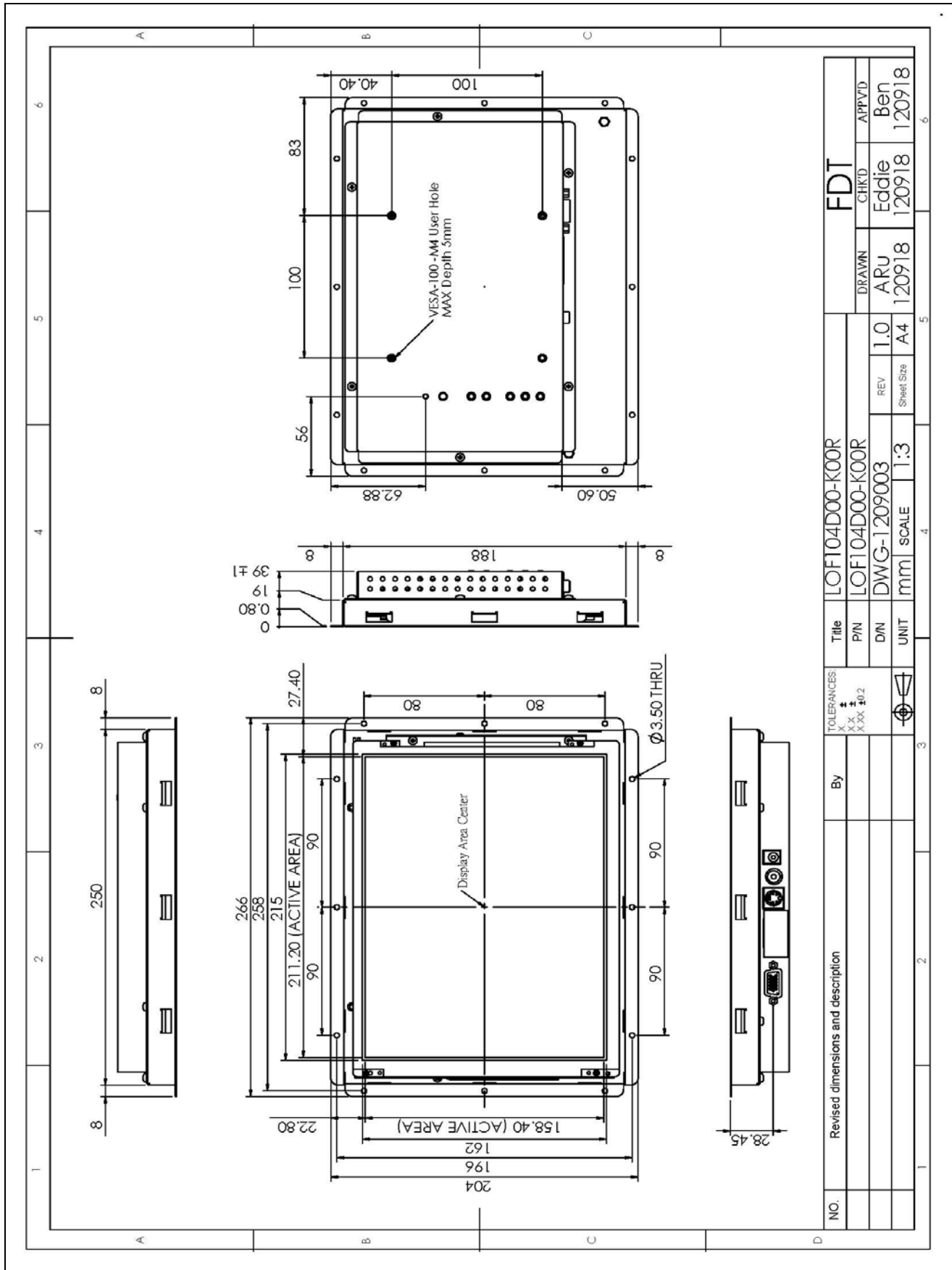
FLAT DISPLAY TECHNOLOGY

■ LOF104Dxx-KxxR V0.0



6. Mechanical Drawing

6.1 LOF104D00-K00R

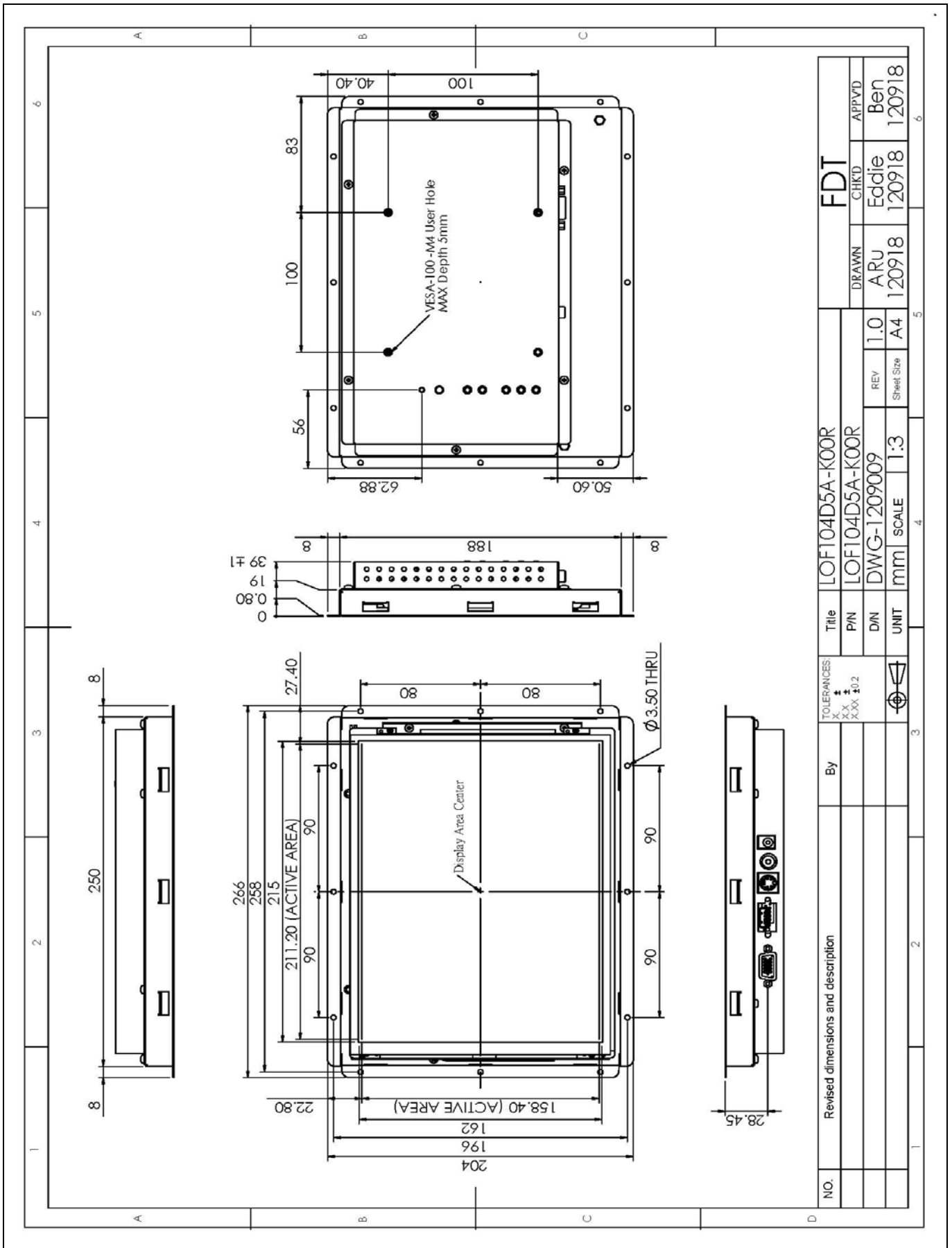


FLAT DISPLAY TECHNOLOGY

■ LOF104Dxx-KxxR V0.0



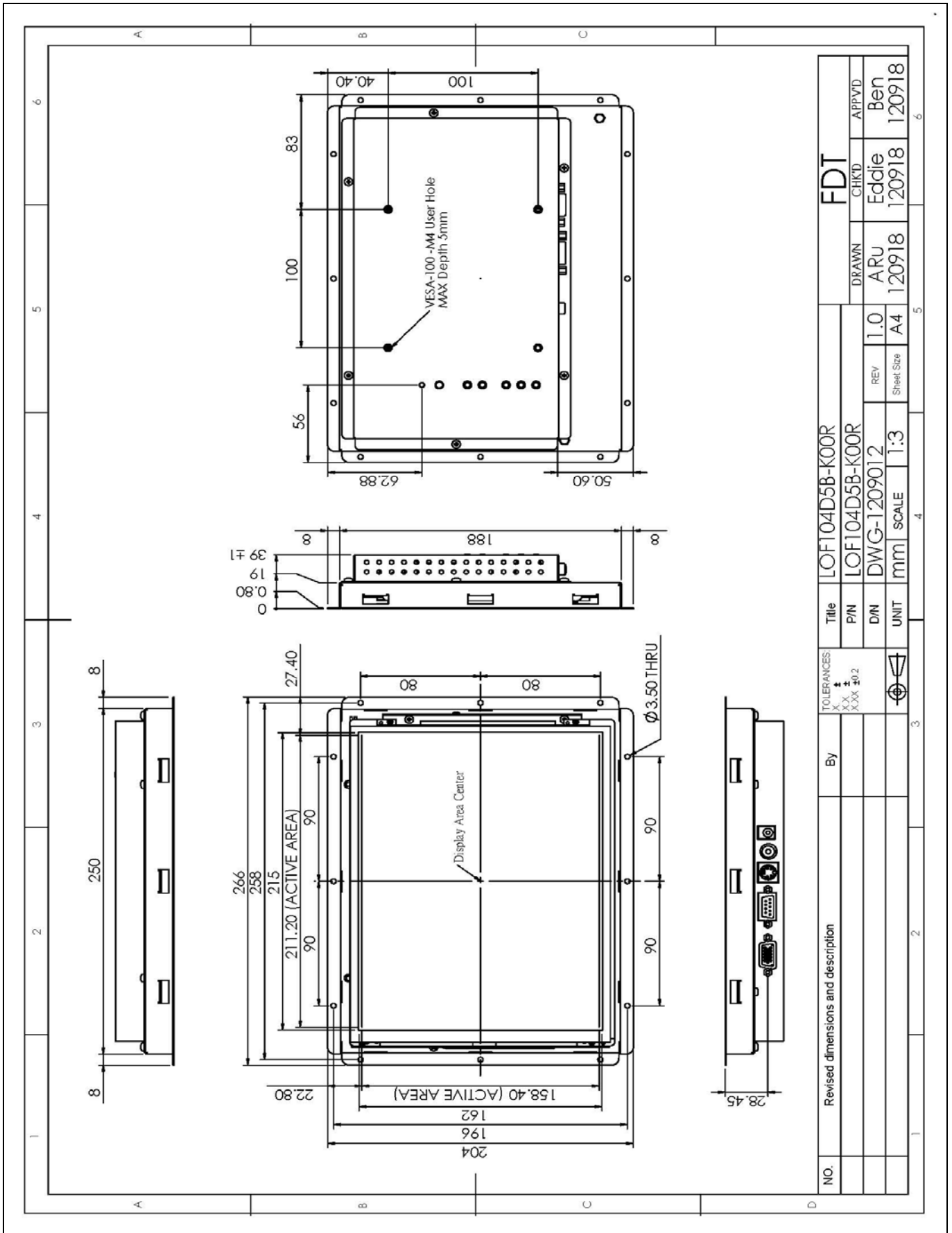
6.2 LOF104D5A-K00R



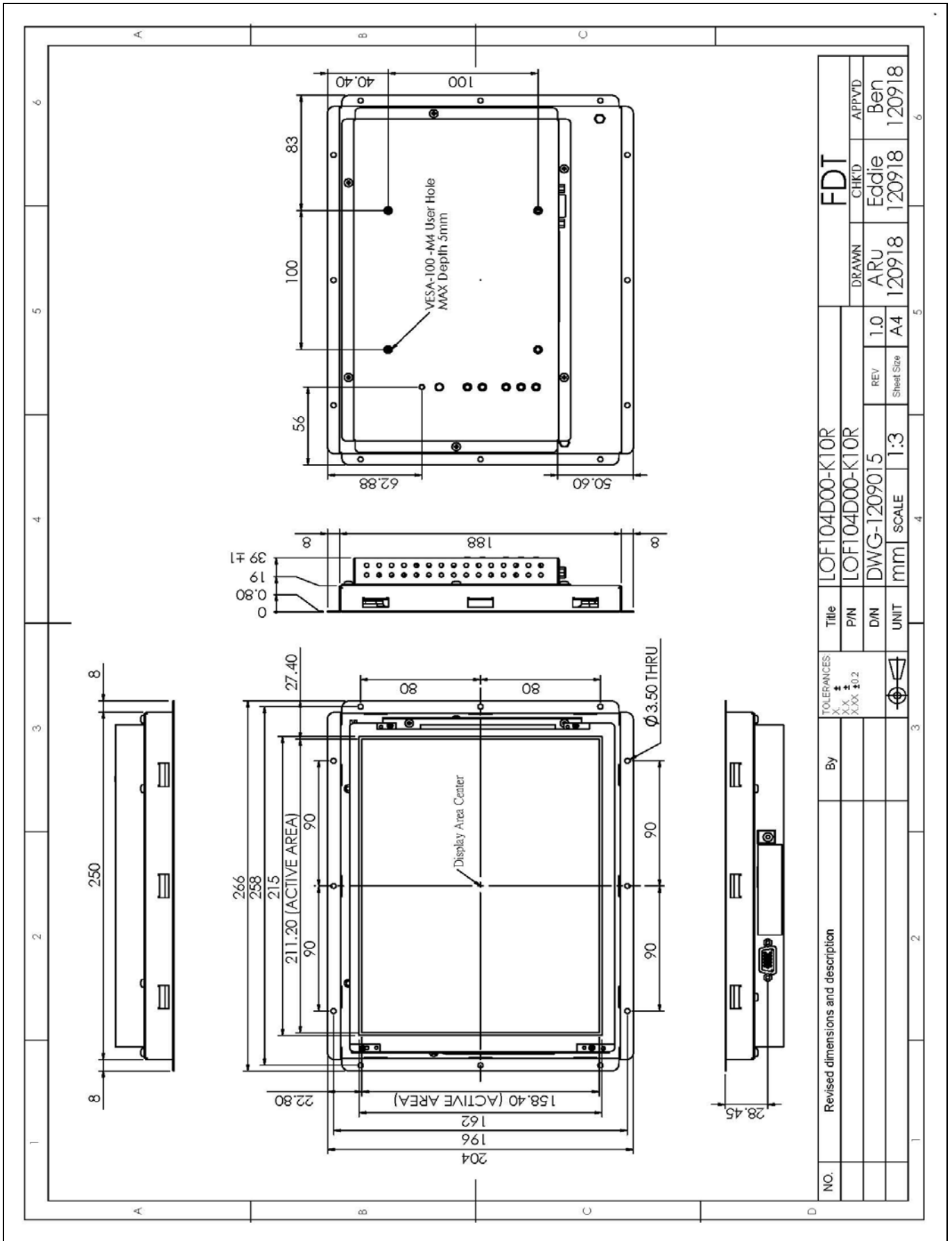
FLAT DISPLAY TECHNOLOGY

LOF104Dxx-KxxR V0.0 

6.3 LOF104D5B-K00R



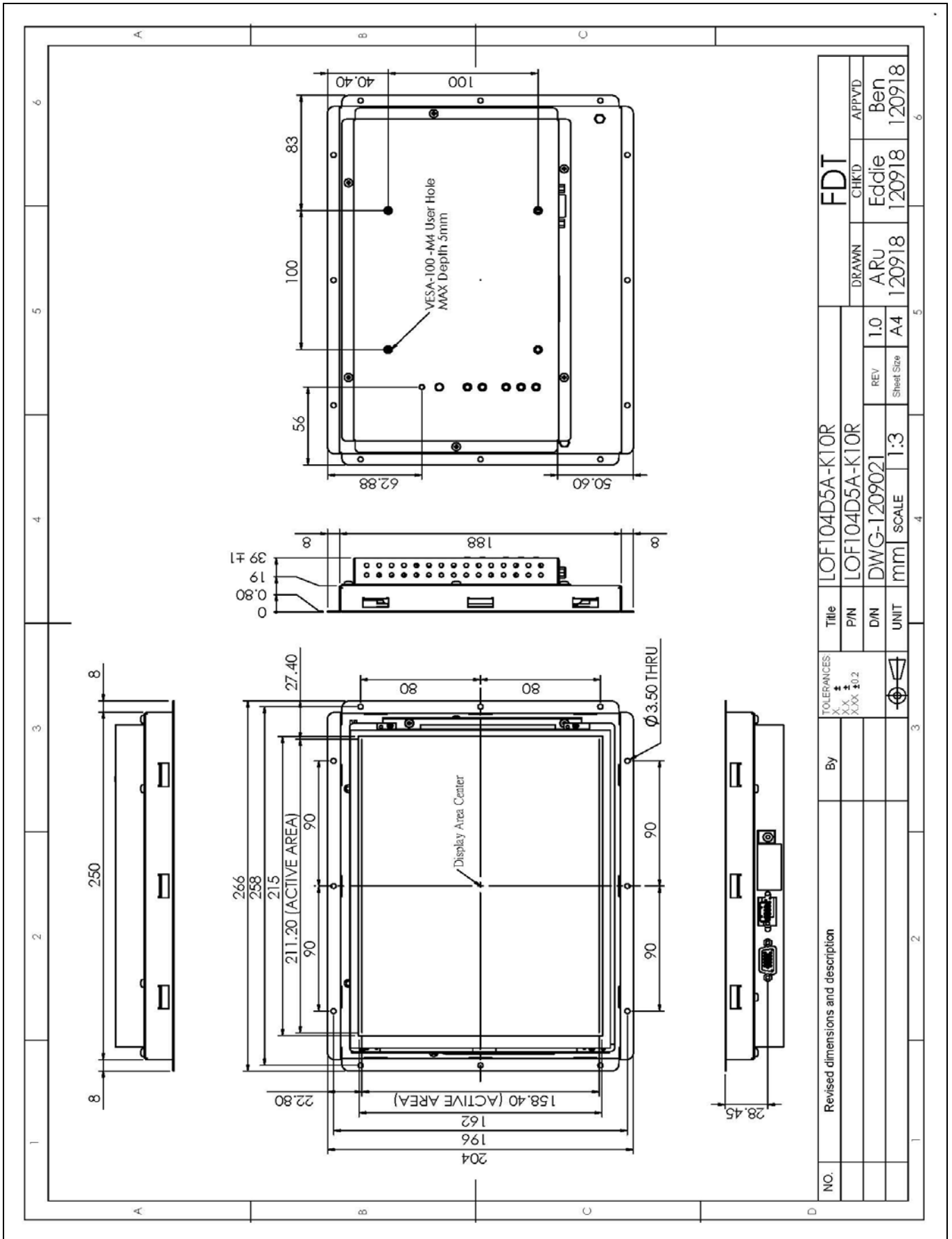
6.4 LOF104D00-K10R



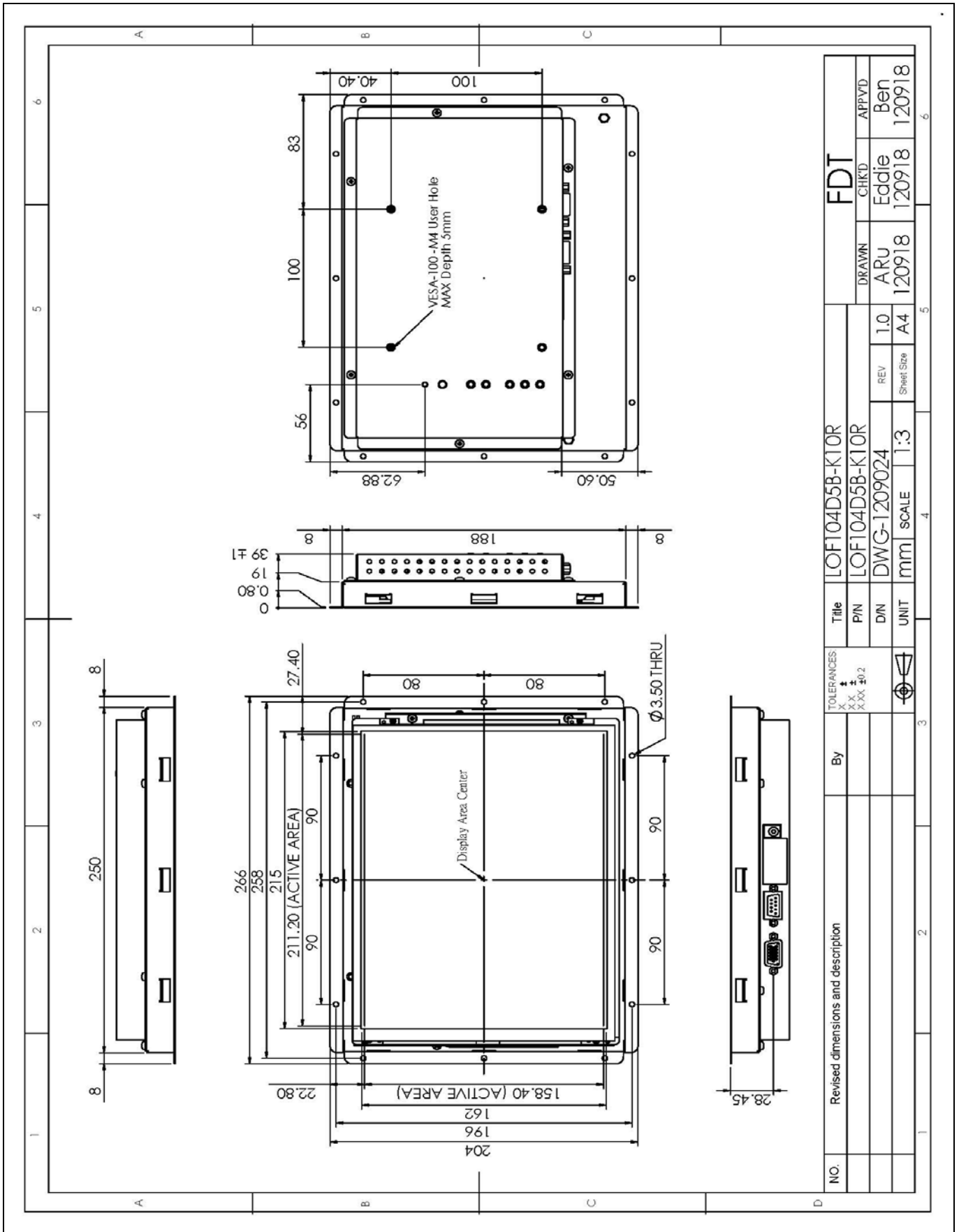
FLAT DISPLAY TECHNOLOGY

LOF104Dxx-KxxR V0.0 

6.5 LOF104D5A-K10R



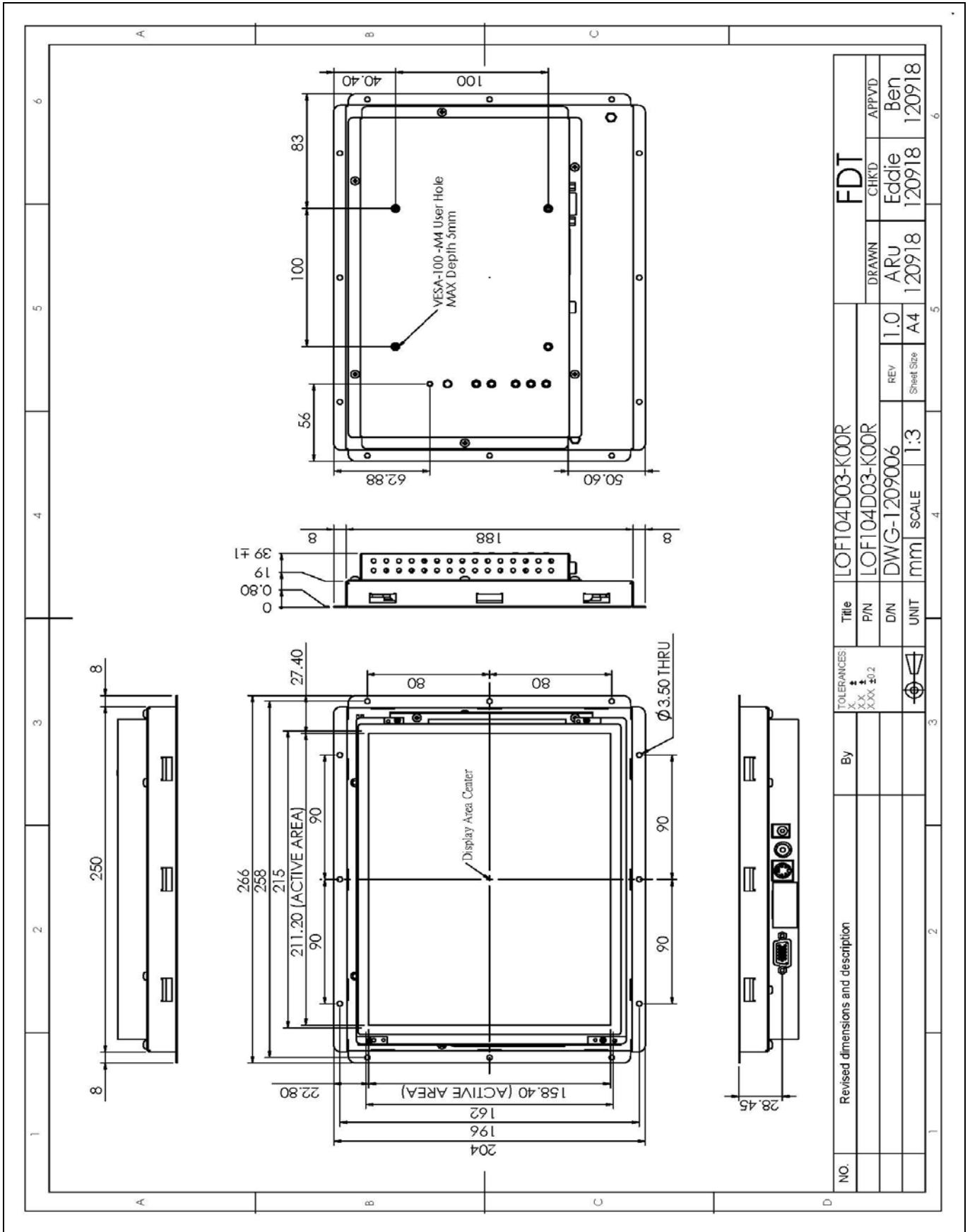
6.6 LOF104D5B-K10R



FLAT DISPLAY TECHNOLOGY

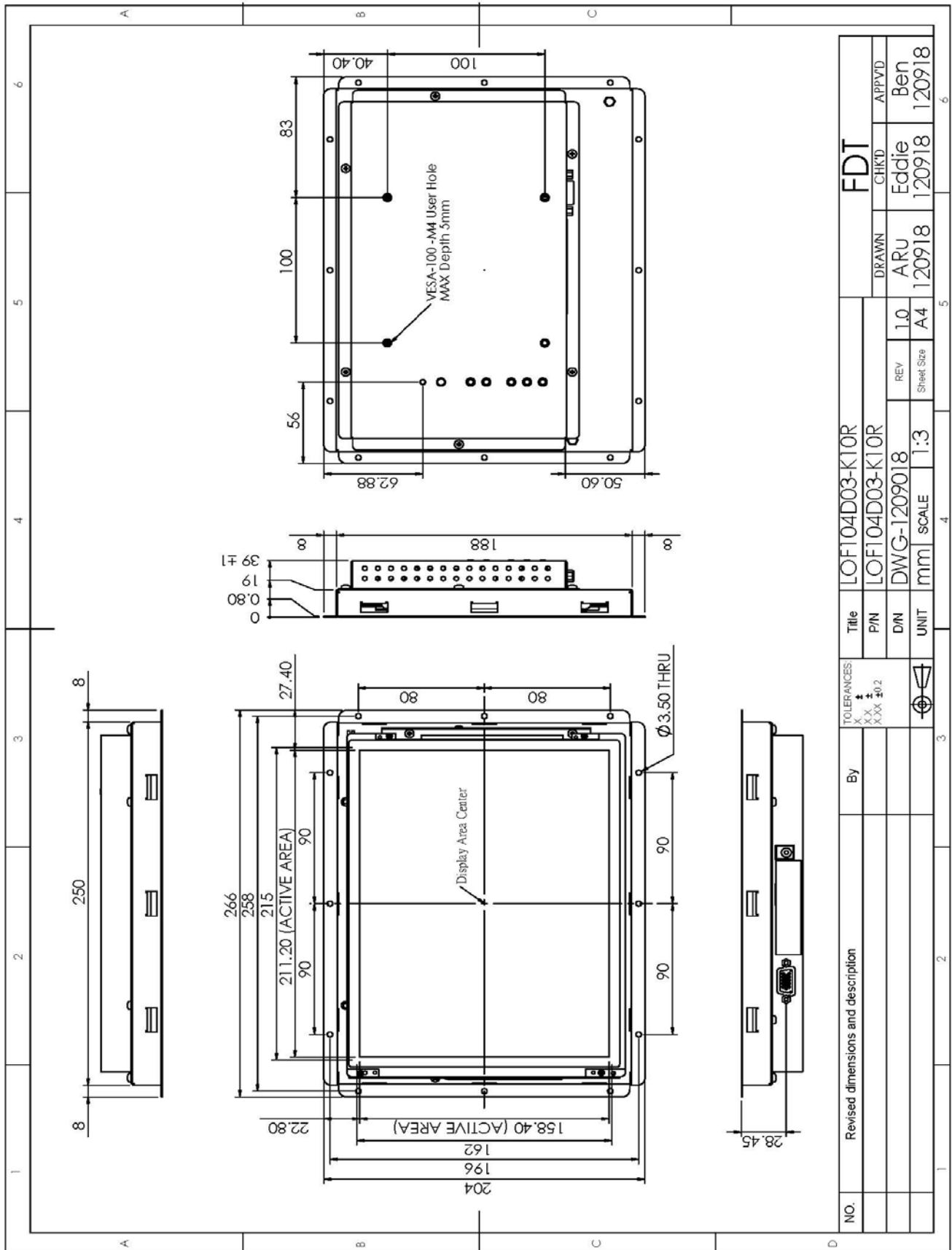
LOF104Dxx-KxxR V0.0 

6.7 LOF104D03-K00R



NO.	Revised dimensions and description	By	TOLERANCES X X.X X.XX ±0.2	Title		FDT	
				LOF104D03-K00R	LOF104D03-K00R	DRAWN	CHK'D
				DWG-1209006	1.0	ARU	Eddie
				mm	A4	120918	120918
				SCALE	1:3	REV	Ben
				UNIT	Sheet Size	120918	120918

6.8 LOF104D03-K10R



7. Packing List

Before you begin installing the Open Frame Monitor, please make sure that the following materials have been shipped:



- A. AC to DC Adapter (100-240V_{AC} 50-60Hz to +12V_{DC} @ 3A)
- B. Power Cord (L:1800mm, Plug Type B for USA)
- C. Video Cable (L:1800mm, LOF104Dxx-K00R Only)
- D. S-Video Cable (L:1800mm, LOF104Dxx-K00R Only)
- E. VGA Cable (L:1600mm)
- F. USB Cable (L:1800mm, LOF104D5A Only)
- G. RS-232 Cable (L:1800mm, LOF104D5B Only)
- H. Touch Screen Driver CD Disk (LOF104D5A & LOF104D5B Only) / User Manual
- I. M4x8 Screw x4 pcs
- J. Mount Clamp and Screw x6 pcs

If any of these items are missing or damaged, contact your distributor or sales representative immediately.

8. Installing the Monitor

8.1 Power cable connection:

Connect the power cord to the AC outlet, and connect the power to the monitor through the AC/DC adapter.

8.2 VGA signal cable connection:

Plug one end of the 15-pin signal cable to the VGA connector at the rear of the PC system and the other end to the Open Frame monitor.

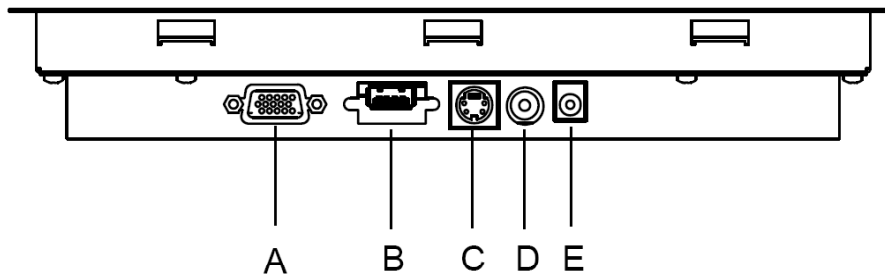
Secure the connectors with the screws on the cable connector at both ends.

8.3 Video / S-Video Cable connection:

If required, connect Video / S-Video Cable from the Open Frame Monitor to the DVD or CCD Camera.

8.4 Switch on the power:

Switch on the power switch on the rear cover of the Open Frame Monitor.



- A. VGA D-sub 15 (Female)
- B. USB / RS-232 Port (For Controller)
- C. S-Video (Y/C Video) In
- D. Video (CVBS) In
- E. DC-In (+12V_{DC} The DC jack core is positive)

9. Key Function by OSD

9.1 Menu Operation

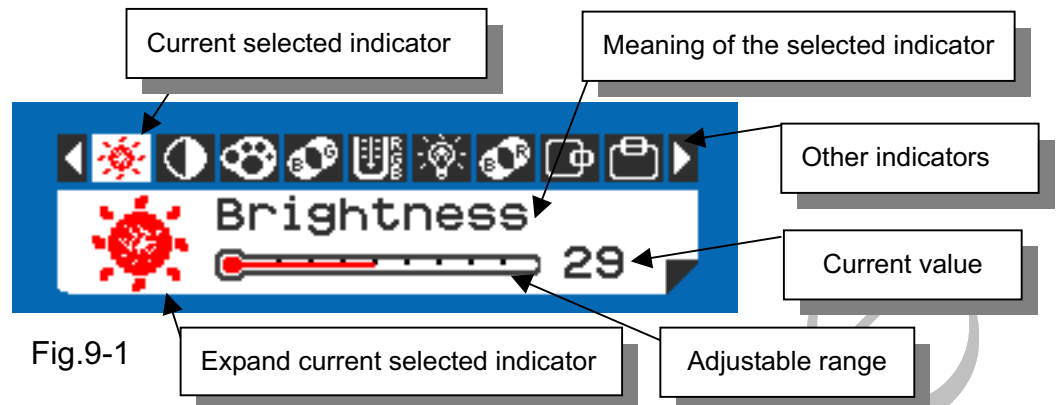
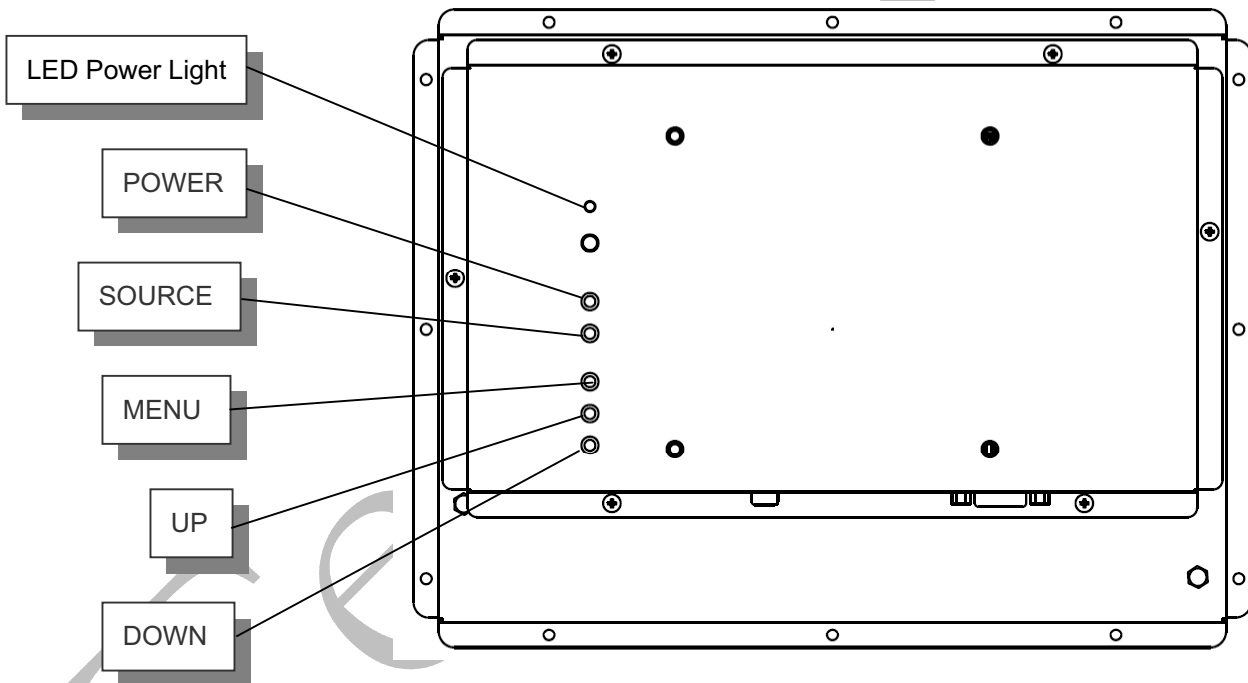


Fig.9-1



Operations of key board :

1. To navigate the menu, press [MENU]. (Fig.9-1)
2. The indicator lighting up in white color is the selected adjustment item.
3. To Next Item of the menu, press [MENU] again.
4. The operations below are only available when "Menu" is started.
5. Press [UP] / [DOWN] to adjust the value of the selected item.

Overview of the menu :

Firmware must be \geq VER 0.26





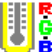








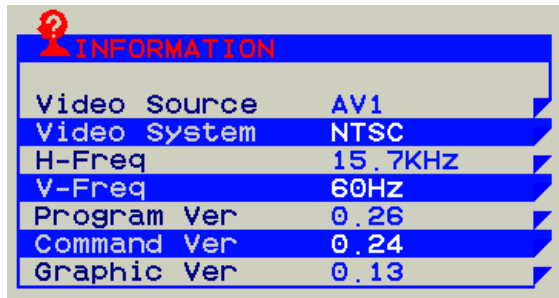
Indicator	Meaning	Adjustable range	For	Remark
	Brightness	0 ~ 64	AV / S-Video / VGA	Adjust-Bar
	Contrast	0 ~ 64	AV / S-Video / VGA	Adjust-Bar
	Color	0 ~ 64	AV / S-Video	Adjust-Bar
	Tint	0 ~ 32	AV / S-Video	Adjust-Bar
	Sharpness	0 ~ 16	AV / S-Video	Adjust-Bar
	Dimmer	0 ~ 9	AV / S-Video / VGA	
	Color Tone	Normal / Warm / Cool	AV / S-Video / VGA	
	H-Position	-25 ~ +25	AV / S-Video / VGA	Balance-Bar
	V-Position	-10 ~ +10	AV / S-Video / VGA	Balance-Bar
	Auto		VGA	
	Scan	Over Scan / Under Scan	AV / S-Video / VGA	
	Information		AV / S-Video / VGA	Fig.9-2
	Setup		AV / S-Video / VGA	Fig.9-3
	Factory Set		AV / S-Video / VGA	
	Exit		AV / S-Video / VGA	

Fig.9-2









FLAT DISPLAY TECHNOLOGY

■ LOF104Dxx-KxxR V0.0 

Setup Menu :



Fig.9-3

Indicator	Meaning	Adjustable range	Function	Remark
	Show Status	ON / OFF	Show signal status.	ON: Show OFF: Hidden
	Blue Screen	ON / OFF	If loss signal will put on the blue or black screen.	ON: Blue OFF: Black
	Auto Power On	ON / OFF	Power input module will be auto turn on.	ON: Auto OFF: Manual
	Auto Saving	OFF / 3s / 5s / 15s / 30s	If signal lost over setting times will be power off.	ON: Auto OFF: Normal
	Detect Source	ON / OFF	Auto detection which source is existence and change.	ON: Auto OFF: Normal
	Return			

Note : VGA only type don't have Detect Source function.

9.2 Operations

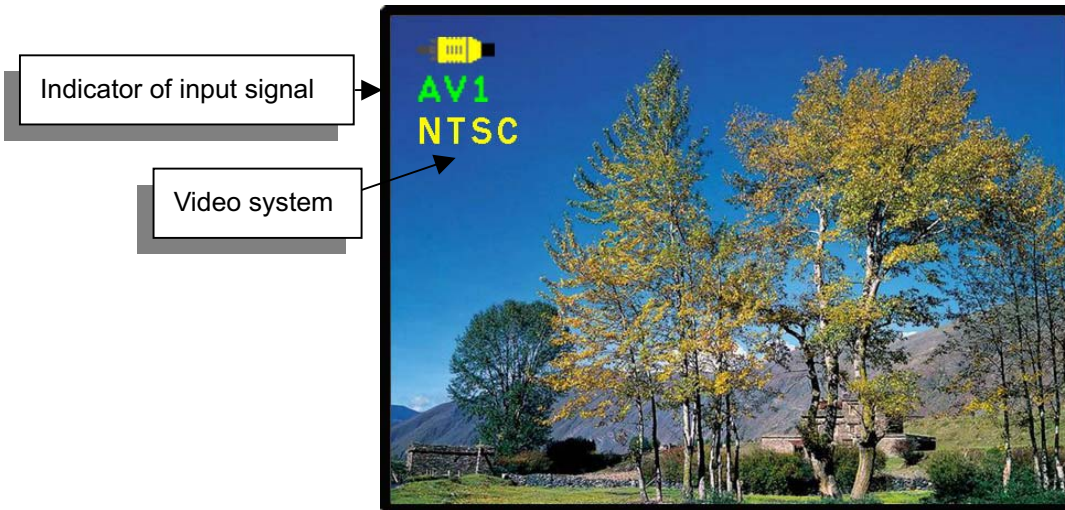





Fig.9-4

[Power] : Monitor power on / off

[Source] : Input signal switch

Overview of input signals :

Indicator	Input signal	Interface	Video system
	AV1	Composite	NTSC / PAL / SECAM
	S-Video1	Y/C	NTSC / PAL / SECAM
	VGA	Analog RGB	640x480_60 / 800x600_60 / 1024x768_60 / 1280x1024_60

10. Trouble Shooting

If experiencing trouble with the monitor, or it fails to operate correctly, please refer to the following instructions before calling for repairs.

Condition	Check Point
1. The picture does not appear	<ul style="list-style-type: none">● Check to see that all the I/O and power cables is firmly seated in the socket.● Check the Power LED is Lighting When the monitor was turned ON.● Check if the brightness control is at the appropriate position, not at the minimum.
2. The screen is not synchronized	<ul style="list-style-type: none">● Check if the I/O signal cable is firmly seated in the socket.● Check if the output level matches the input level.● Make sure the signal timings of the computer system are within the specification of the monitor.
3. The position of the screen is not in the center	<ul style="list-style-type: none">● Adjust the H-position, and V-position, or perform the auto adjustment Or Factory Set.
4. The screen is too bright (too dark).	<ul style="list-style-type: none">● Check if the brightness or contrast control is at the appropriate position, not at the Maximum (Minimum).
5. The Screen is shaking or waving	<ul style="list-style-type: none">● Press the Auto adjustment control to adjust. Moving all objects which emit a magnetic field such as motor or transformer, away from the monitor. Check if the specific voltage is applied.● Check if the signal timing of the computer system is within the specification of monitor.

If you are unable to correct the fault by using this chart, stop using your monitor and contact us.

11. Panel Mount Installation (Mount Clamp and Screw)

